

Driver Installation Guide

Windows 8.1/10/11 ----- 1

Windows 7 ----- 3

Windows 8.1/10/11

Step 1. Download the Driver

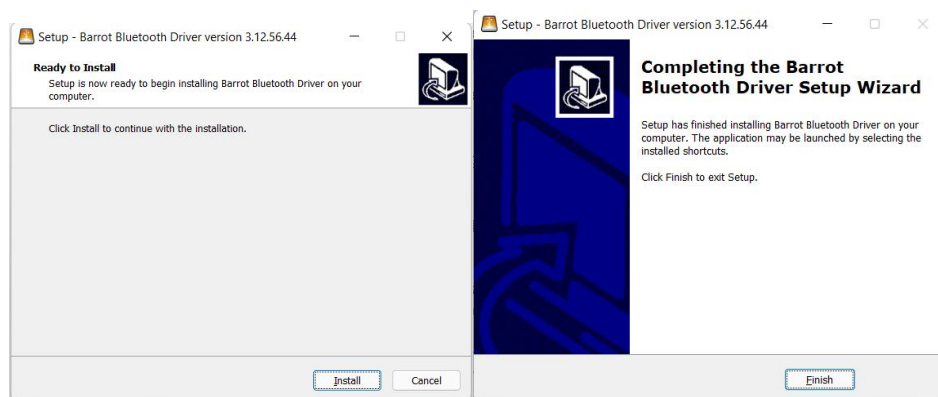
Go to UGREEN official website (<https://www.ugreen.com/pages/download>), download the corresponding driver based on the model indicated on the product or packaging.

Step 2. Install the Driver

1. Unzipped the package, open the folder, then double-click "setup" to run it.

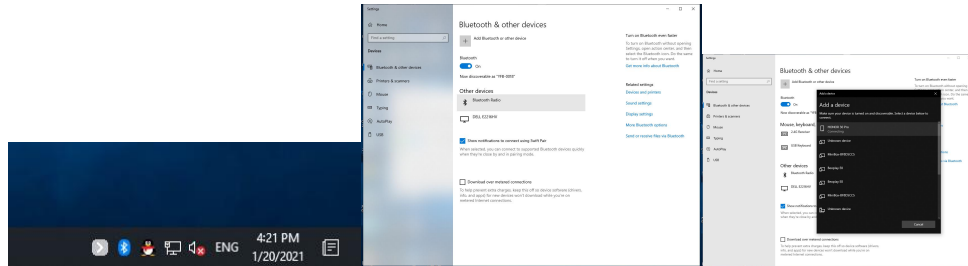
Name	Date modified	Type	Size
amd64	11/23/2023 2:01 PM	File folder	
Packet	11/23/2023 2:01 PM	File folder	
x86	11/23/2023 2:01 PM	File folder	
setup	8/6/2021 5:37 PM	Application	92 KB
setup	3/17/2021 8:48 PM	Configuration setti...	1 KB

2. Follow the wizard and click "Install" and "Finish" to complete the installation process. Once done, the driver will be ready for use.

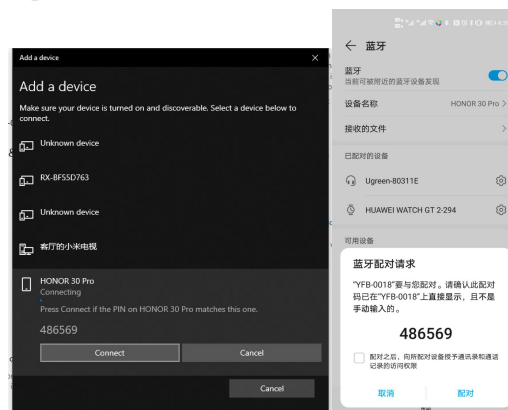


Step 3. Pairing Bluetooth Device

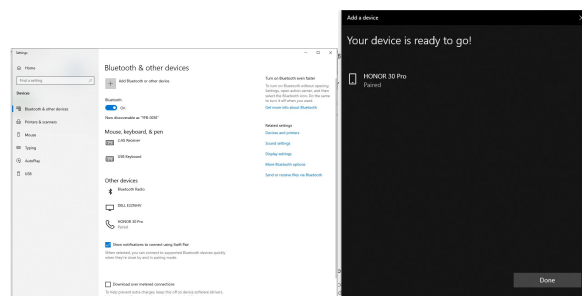
1. Turn on the Bluetooth on your dedvice (take HONOR P30 Pro as an example).
2. Double-click the Bluetooth icon in the taskbar and click icon “+” > click “Bluetooth” to enter the Bluetooth devices list.



3. Locate the phone model on the list, click “Connect”, the phone will pop-up “Bluetooth pairing request”, click “Pair” on the phone.



4. Once pairing is completed, the device list displays that the phone is “Paired”.

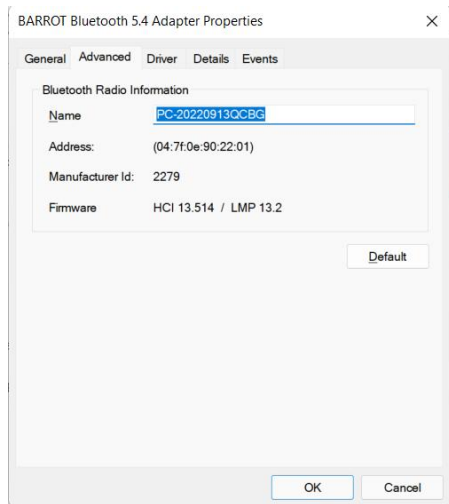
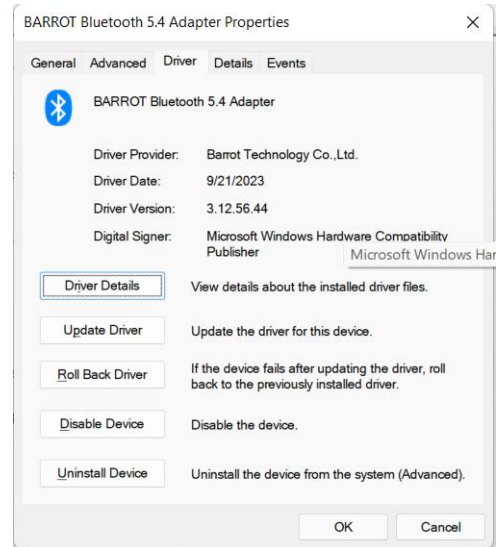
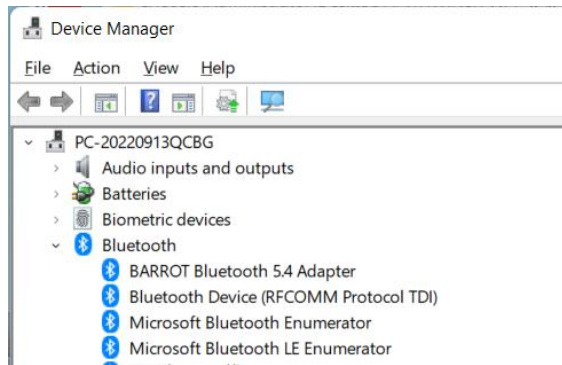


Tip 1:

- For other Bluetooth devices (speakers/mice/game controllers), click the device name to connect them to the computer.
- For some Bluetooth keyboard, the computer will generate a PIN, enter the PIN on the keyboard to complete pairing.

Tip 2:

If you want to check the driver version, please right-click “This PC” > select “Manage” > navigate to “Device Manager”, then double-click on the Bluetooth icon to view the version.



Windows 7

Step 1. Download the Driver

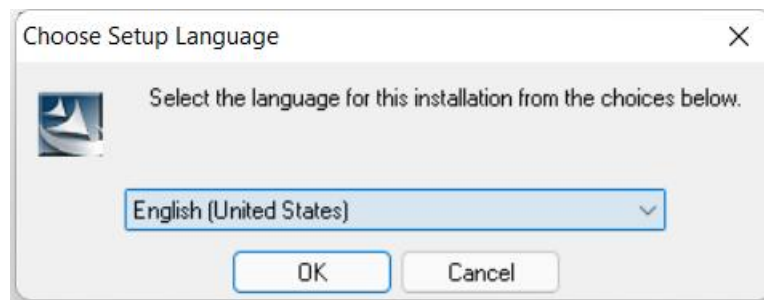
Go to UGREEN official website (<https://www.ugreen.com/pages/download>), download the corresponding driver based on the model indicated on the product or packaging.

Step 2. Install the Driver

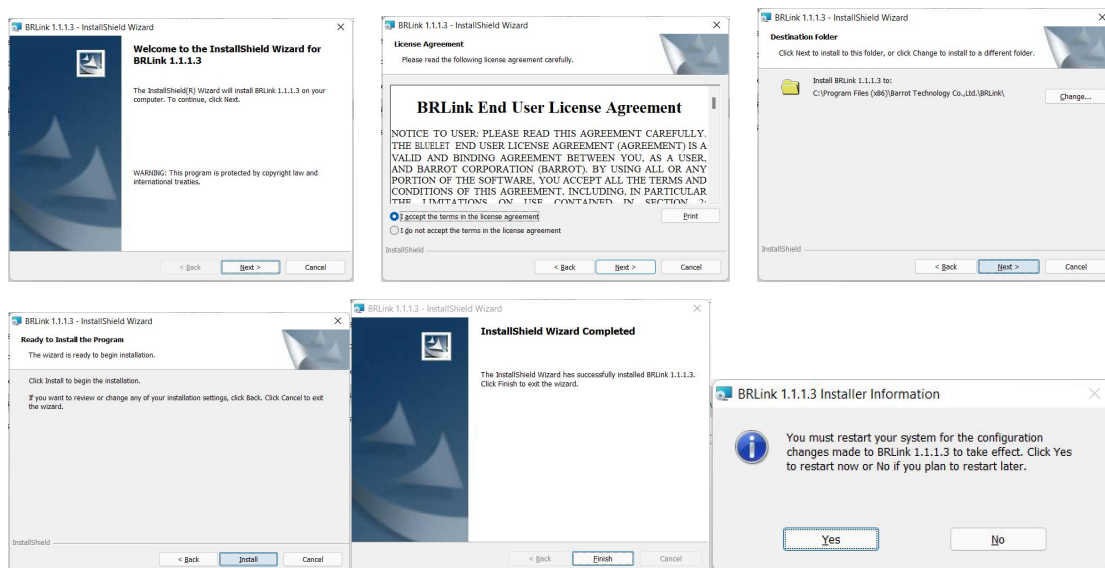
1. Unzipped the package, open the folder, then double-click “setup” to run it.

Name	Date modified	Type	Size
amd64	11/23/2023 2:01 PM	File folder	
Packet	11/23/2023 2:01 PM	File folder	
x86	11/23/2023 2:01 PM	File folder	
setup	8/6/2021 5:37 PM	Application	92 KB
setup	3/17/2021 8:48 PM	Configuration setti...	1 KB

2. Select the language and click "OK".



3. Follow the wizard and click "Next", and "Install"... until the "Finish" shows. Then click "Yes" to restart your computer.



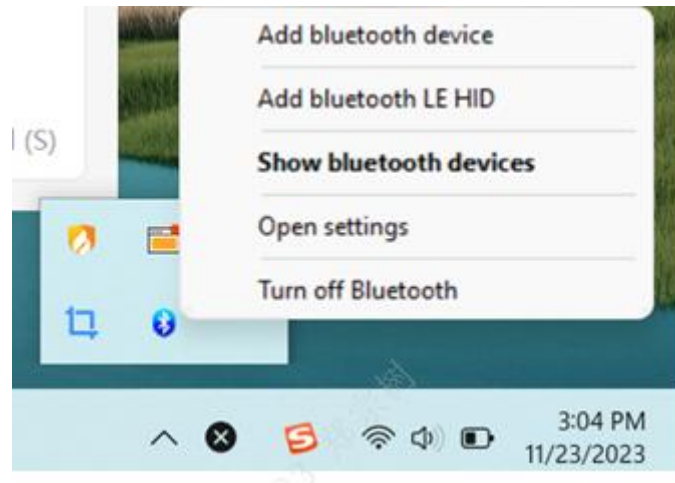
4. After the computer restarts, a Bluetooth icon will appear in the taskbar's lower right corner, indicating that the installation is successful.



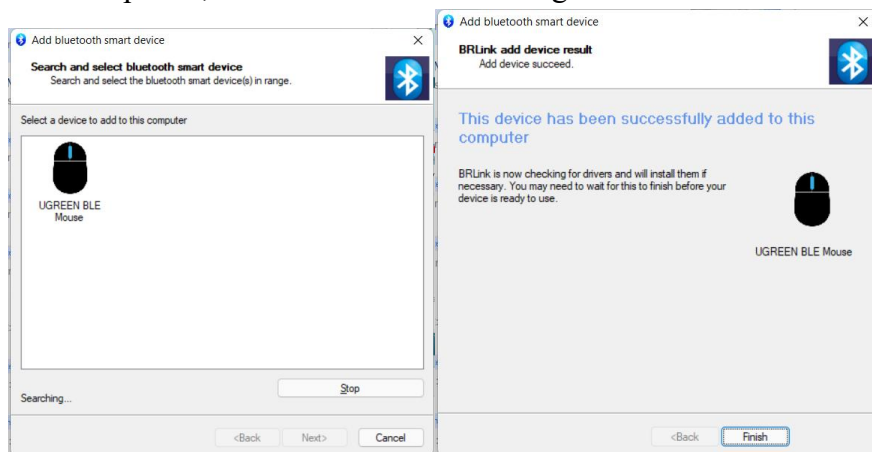
Step 3. Pairing Bluetooth Device

1. Connect Bluetooth Keyboard or Mouse

- ① Right-click the Bluetooth icon and select "Add Bluetooth LE HID".



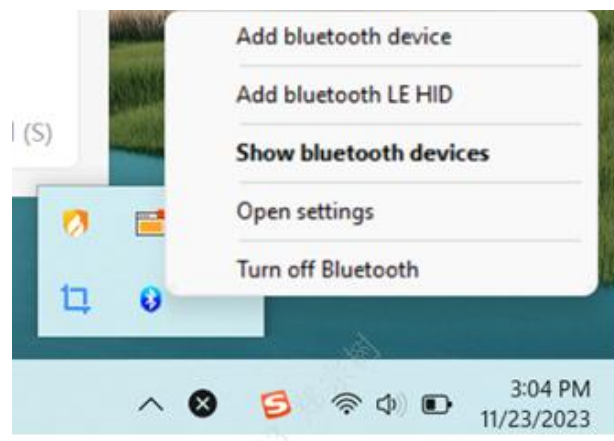
- ② Double-click the Bluetooth keyboard or mouse you want to connect. After the connection is completed, click "Finish" to start using it.



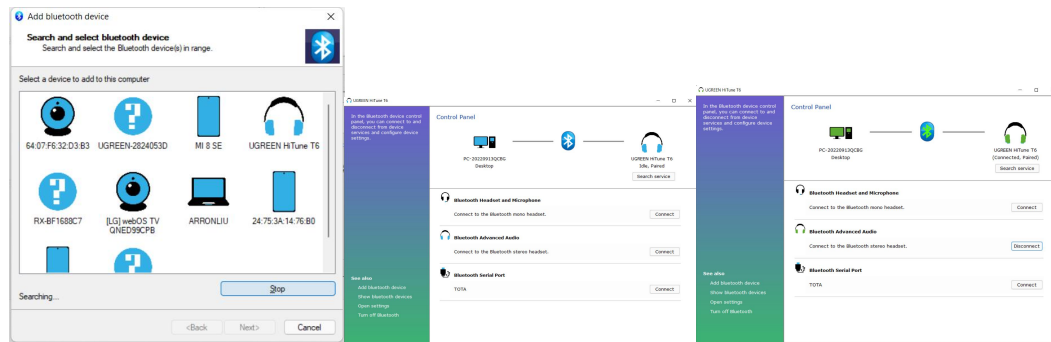
Note: Pictures above are for reference only.

2. Connect Bluetooth Headphones or Speakers

- ① Right-click the Bluetooth icon and select "Add Bluetooth device".



② Double-click the headphone or speaker you want to connect, and then click "Connect" in the "Bluetooth Headset and Microphone" or "Bluetooth Advanced Audio" column as needed to start using it.



Note: Pictures above are for reference only.